



Stable Carbon Isotopes Applied to Vegetation Reconstruction in the Teotihuacan Valley, Mexico

Emily McClung de Tapia^{1,*}, Carmen Cristina Adriano-Morán²

¹ Laboratorio de Paleobotánica y Paleoambiente, Instituto de Investigaciones Antropológicas, Universidad Nacional Autónoma de México, Ciudad Universitaria, 04510, México, D.F.

² Posgrado en Ciencias Biológicas, Facultad de Ciencias, Universidad Nacional Autónoma de México, Ciudad Universitaria, 04510, México, D.F.

* mcclung@servidor.unam.mx

Abstract

Stable carbon isotope values ($\delta^{13}\text{C}$) from organic material in soils and sediments suggest possible sources of carbon in the organic component and contribute to the development of hypotheses concerning the composition of regional vegetation. This paper explores the application of $\delta^{13}\text{C}$ to the study of soils and sediments in conjunction with the analysis of plant remains in the Teotihuacan Valley, Mexico, located approximately 50 km NE of Mexico City, known for the archaeological site of Teotihuacan, occupied between *ca.* AD 1-650. The ratios of $^{13}\text{C}/^{12}\text{C}$ from soil organic matter (SOM) provide a complementary approach towards the analysis of past vegetation change in regions characterized by relatively poor preservation of plant macrofossils and pollen. The analysis of phytoliths recovered from soils and sediments offers an additional source of evidence for broad changes in environmental conditions based on changes in the relative proportions of C3 and C4 grasses. In this paper $\delta^{13}\text{C}$ ratios obtained from SOM in profiles in the Teotihuacan Valley are compared with the results of phytolith analysis in the same horizons. The relative proportion of carbon derived from C4-CAMS (Crassulacean Acid Metabolism) plants was calculated. Phytolith analysis focused on the relative proportions of C3 (diagnostic phytoliths of the Pooideae subfamily of Poaceae) and C4 grass taxa (subfamilies Panicoideae, Chloridoideae and Aristodoideae). The $\delta^{13}\text{C}$ ratios obtained from Tlajinga, located in an area of prehispanic irrigation south of the San Lorenzo River in the central Valley, indicate the predominance of C4-CAMS plants while phytoliths from the same horizons reflect a greater proportion of C4 grasses, although proportionally lower than isotopic indicators. The values of $\delta^{13}\text{C}$ in SOM from Otumba, situated in close proximity to a river that also provided water for a prehispanic irrigation system, reflect a slightly lower predominance of C4-CAMS plants, and a slight increase in C4 grass phytoliths, with respect to Tlajinga. San Pablo provided evidence for the greatest predominance of C4-CAMS plants based on $\delta^{13}\text{C}$ values in SOM whereas the phytoliths recovered from the same horizons indicate a higher proportion of C3 grasses. In general, the isotopic signatures reported here indicate changes in relative proportions of C4-CAMS plants, suggesting variability in the response of vegetation to local conditions, with a predominance of C4-CAMS plants in soil organic matter and considerable variability in proportions of C4 grass phytoliths in the contexts analyzed.

Keywords: Stable carbon isotopes, buried soils, Teotihuacan, phytoliths.

Resumen

*Los valores de los isótopos estables de carbono ($\delta^{13}\text{C}$) del material orgánico presente en suelos y sedimentos, sugieren las posibles fuentes de carbono, contribuyendo al desarrollo de hipótesis referentes a la composición de la vegetación regional. Este trabajo explora la utilidad del $\delta^{13}\text{C}$ para el estudio de los suelos y sedimentos en conjunto con los resultados de los análisis de los restos de plantas del Valle de Teotihuacan, México, localizado aproximadamente a 50 km al noroeste de la Ciudad de México, conocido por el sitio arqueológico de Teotihuacan, ocupado entre *ca.* AD 1-650. Las proporciones de los isótopos de $^{13}\text{C}/^{12}\text{C}$ de la materia orgánica del suelo (MOS), ofrecen un método complementario para el análisis del cambio de la vegetación en el pasado en regiones caracterizadas por*

una pobre conservación de macro-restos vegetales y de polen. El análisis de los fitolitos recuperados de suelos y sedimentos reporta una fuente adicional de evidencia de amplios cambios en las condiciones ambientales con base en las variaciones en los porcentajes relativos de pastos C3 y C4. En este trabajo se comparan los valores de $\delta^{13}\text{C}$ obtenidos de la materia orgánica de suelo de perfiles en el Valle de Teotihuacan con los fitolitos analizados en los mismos horizontes. Se calculó el porcentaje relativo de carbono derivado de plantas C4-CAMS (Crassulacean Acid Metabolism). El examen de los fitolitos se centró en los porcentajes relativos de los taxa de pastos C3 (fitolitos diagnósticos de la subfamilia Pooideae de Poaceae) y taxa de pastos C4 (subfamilias Panicoideae, Chloridoideae y Aristodoideae). Las proporciones de $\delta^{13}\text{C}$ de Tlajinga, situado en un área de irrigación prehispánica al sur del Río San Lorenzo en el sector sur del valle central, evidencian la predominancia de plantas C4-CAMS mientras que los fitolitos recuperados de los mismos horizontes indican un porcentaje mayor de pastos C4 pero proporcionalmente menor que los indicadores isotópicos. Los valores de $\delta^{13}\text{C}$ en MOS obtenidos de Otumba, situado junto a un río que también suministraba agua a un sistema prehispánico de irrigación, refleja una predominancia ligeramente menor de plantas C4-CAMS, así como un ligero incremento en los fitolitos dominados por pastos C4, con respecto a Tlajinga. San Pablo proporcionó evidencia para la mayor predominancia de plantas C4-CAMS representados por los valores de $\delta^{13}\text{C}$ en MOS, mientras que los fitolitos recuperados de los mismos horizontes reflejan mayor proporción de pastos C3. En general, las firmas isotópicas reportadas señalan diferencias en los porcentajes relativos de plantas C4-CAMS, lo que sugiere una variabilidad en la respuesta de la vegetación a condiciones locales, con una predominancia de plantas C4-CAMS en la materia orgánica del suelo, mientras que los fitolitos señalan concentraciones muy variables de pastos C4 en los contextos estudiados.

Palabras clave: isotopos estables de carbono, suelos enterrados, Teotihuacan, fitolitos.

1. Introduction

Stable carbon isotope values ($\delta^{13}\text{C}$) from organic material in soils and sediments suggest possible sources of carbon in the organic component and contribute to the development of hypotheses concerning the composition of regional vegetation (Biedenbender *et al.*, 2004; Boutton, 1996). Such data provide complementary information which, when combined with the determination of stratigraphic micro- and macrobotanical remains from archaeological contexts, broadens our perspective concerning past landscapes. This paper explores the application of $\delta^{13}\text{C}$ to the study of soils and sediments in conjunction with the analysis of plant remains in the Teotihuacan Valley, Mexico (Figure 1). Building on the preliminary analyses of stable carbon isotopes from several soil profiles in the Teotihuacan region (Lounejeva-Baturina *et al.*, 2006, 2007; Rivera-Uria *et al.*, 2007), $\delta^{13}\text{C}$ values obtained from additional profiles in the same region (McClung de Tapia *et al.*, 2005, Solleiro-Rebolledo *et al.*, 2011) are examined in order to evaluate the evidence for vegetation change.

This area, located approximately 50 km NE of Mexico City, is best known for the archaeological site of Teotihuacan, the earliest city of its size and density in the Americas, occupied between *ca.* AD 1-650. Although the prehispanic urban center of Teotihuacan represents a significant focus for our research, the results presented here are part of an attempt to establish a scenario of landscape transformation from the period of prehispanic occupation through the Colonial period, based on the analysis of sediments and associated plant remains, including macrobotanical remains, pollen and phytoliths (McClung de Tapia *et al.*, 2003).

In a highly perturbed landscape such as the Teotihuacan Valley where paleoenvironmental studies are frequently

limited by relatively poor preservation of plant macrofossils and pollen in predominantly alluvial soils, the ratio of $^{13}\text{C}/^{12}\text{C}$ provides a complementary approach towards the analysis of past vegetation change. Phytoliths recovered from soils and sediments offer an additional source of evidence for broad changes in environmental conditions based on the relative proportions of C3 and C4 grasses (McClung de Tapia *et al.*, 2008). Macrobotanical remains are concentrated in the upper 50 cm of profiles for the most part, and pollen is often insufficient to permit quantitative analysis.

2. $^{13}\text{C}/^{12}\text{C}$ ratios

Stable carbon isotope ratios in soil organic matter (SOM) provide information regarding the kinds of plants (C3 and C4/CAMS - Crassulacean Acid Metabolism) that contributed to the organic component. In the Teotihuacan Valley this technique is employed to complement the evidence for vegetation change suggested by other proxies.

The ratio of $^{13}\text{C}/^{12}\text{C}$ may be used as an indicator of the origin of organic carbon in soils and sediments (Boutton, 1996). Differences in the photosynthetic pathways of plant taxa, resulting in the characterization of Calvin-Benson Cycle (C3 or non-Krantz), Slack-Hatch Cycle (C4 or Krantz) and Crassulacean Acid Metabolism (CAM), are reflected in different proportions of ^{13}C with respect to ^{12}C . $\delta^{13}\text{C}$ ratios of C3 plants range from approximately -32 ‰ to -20 ‰ with a mean of -27 ‰. The range for C4 plants varies between -17 ‰ and -9 ‰, with a mean of approximately -13 ‰. The ratios for C3 and C4 plant taxa therefore differ from one another by roughly -14 ‰. C4 photosynthesis represents a more efficient form of CO_2 fixation than the C3 pathway. It has been suggested that C4 plants evolved

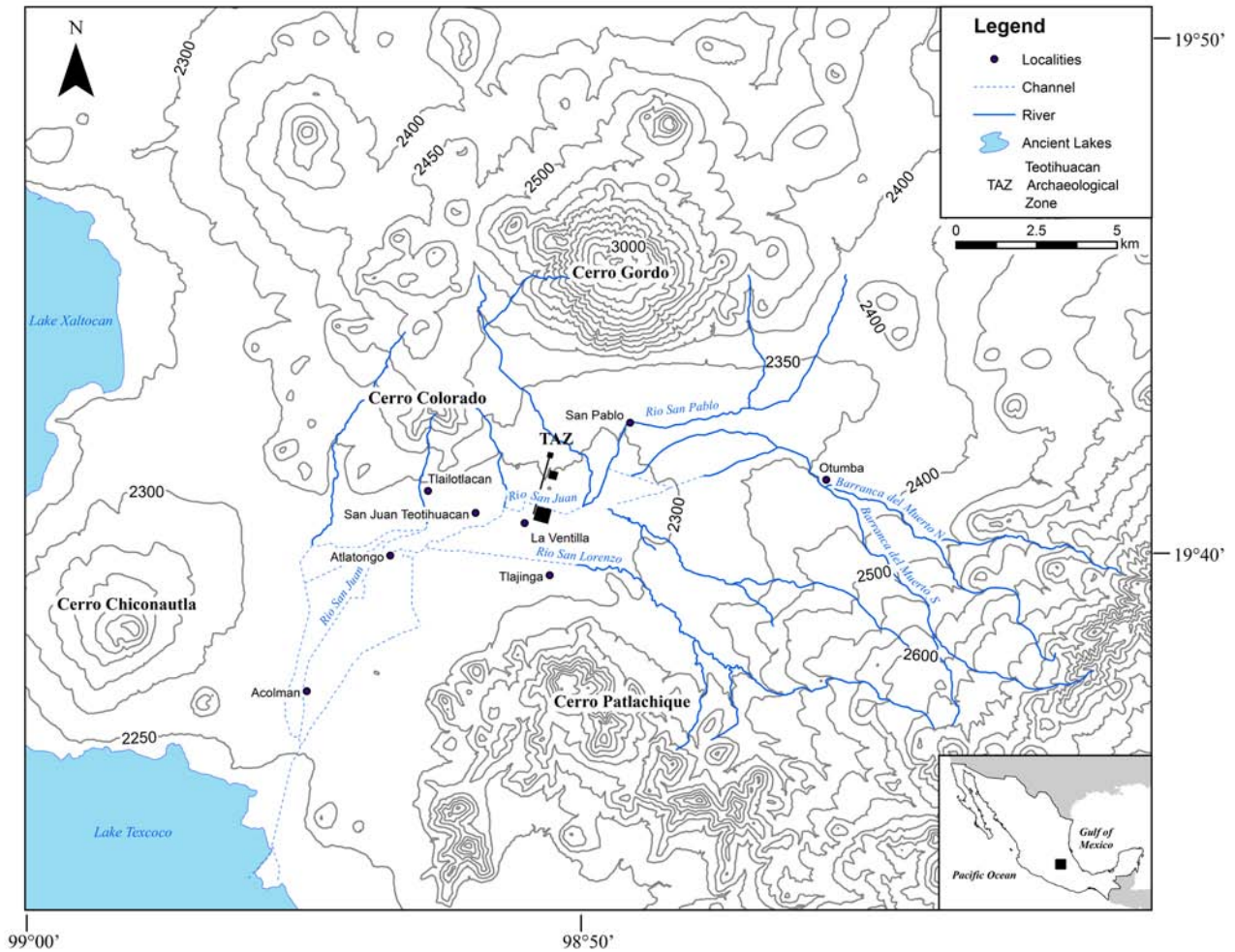


Figure 1. The Teotihuacan Valley, Mexico, showing locations of profiles mentioned in the text. (Map by Rodrigo Tapia-McClung).

in arid environments where tolerance of high intensity of light, temperature and hydric stress would confer a selective advantage (Gould and Shaw, 1983).

CAMs plants, mainly succulents and Cactaceae, close stomata during the day and fix CO_2 at night by means of a mechanism similar to that of C4 plants, thus reducing water loss. Some species are able to shift to a C3 daytime photosynthetic cycle when environmental conditions vary whereas other species always incorporate CO_2 at night (Lajtha and Marshall, 1994). The latter have $\delta^{13}\text{C}$ values similar to C4 plants while the former range from -28 ‰ to -10 ‰. The CAMs taxa analyzed in the Teotihuacan Valley have a mean $\delta^{13}\text{C}$ ratio of -13.30 ‰ (Lounejeva-Baturina *et al.*, 2006). Thus $\delta^{13}\text{C}$ ratios can be used to quantify aspects of vegetation dynamics in ecosystems, such as the changes in relative proportions of plants and, by association, the environmental conditions (e.g. temperature and humidity) within which they developed.

The carbon isotope ratio ($\delta^{13}\text{C}$) is conventionally expressed relative to the Pee Dee Belemnite (PDB) standard and results are calculated on a *per mil* basis (parts

per thousand, ‰) (Boutton, 1996; Biedenbender *et al.*, 2004). Boutton (1996) points out that there is little change in the $\delta^{13}\text{C}_{\text{PDP}}$ value of plant material as it decomposes and, consequently, the $\delta^{13}\text{C}_{\text{PDP}}$ values of soil organic carbon combine the relative contributions of plant material from C3, C4 and CAMS plant types to the soil organic carbon pool. Studies of differential decomposition rates, variability in atmospheric $\delta^{13}\text{C}$, and isotope fractionation by microorganisms suggest that the potential increases of $\delta^{13}\text{C}$ in bulk soil organic matter are lower than the difference between the ranges of C3 and C4 plants (Boutton, 1996; Kelly *et al.*, 1998; Koch, 1998; Biedenbender *et al.*, 2004). Thus, the basic assumption underlying the use of $\delta^{13}\text{C}$ ratios as indicators of vegetation dynamics and related environmental change is that the primary influence on $\delta^{13}\text{C}_{\text{PDP}}$ of soil organic matter is the relative contribution of C3 versus C4 plants to the total net primary productivity of the community (Kerns *et al.*, 2001). Nordt *et al.* (2007, 2008) emphasize the utility of stable carbon isotope analysis of SOM to ascertain the percent contribution of C4 plants as an indicator of temperature regime.

Recent archaeological applications of $\delta^{13}\text{C}$ in Mesoamerican archaeology have focused on detection of the presence of maize in soils (Webb *et al.*, 2004, 2007; Wright, 2005; Johnson *et al.*, 2007) or as residues in cooking vessels (Hart *et al.*, 2007, 2009; Seinfeld *et al.*, 2009). Stable carbon isotopes have been also used to reconstruct aspects of past human environments, based on the analysis of tooth enamel in mammals (Feranec, 2008), charcoal (Hall *et al.*, 2008) and soil organic matter (Pessenda *et al.*, 1998; Vågen *et al.*, 2006; Wang *et al.*, 2010).

Lounejeva-Baturina *et al.* (2006, 2007) undertook the first systematic determinations of stable carbon isotope ratios in soils in the Teotihuacan region, providing an initial view of the spatial and temporal differences in vegetation and thereby demonstrating the potential value of the technique for the study of vegetation change in the area through time. Additional values for $\delta^{13}\text{C}$ were obtained at different stages of paleoenvironmental research in the Teotihuacan Valley, both as secondary products of AMS dating of bulk sediment samples from soil profiles as well as specific samples obtained from prehispanic agricultural surfaces (McClung de Tapia *et al.*, 2005). The analysis of these data in conjunction with results reported by Rivera-Uria *et al.* (2007) and Solleiro-Rebolledo *et al.* (2011) is considered here together with other paleoethnobotanical indicators for past vegetation in the region.

Because radiocarbon dates on SOM represent the average age of all carbon atoms in an open system, SOM ages are always younger than the oldest organic matter and the age of initial pedogenesis (McClung de Tapia *et al.*, 2005). In the present study, we selected two sites (Tlajinga and Otumba) with complementary prehispanic ceramic evidence (Pérez-Pérez, 2003) that allowed us to postulate the approximate time period during which the selected horizons were exposed in spite of seemingly incongruous radiocarbon dates. The third site, San Pablo, provided several *in situ* charcoal specimens (Rivera-Uria *et al.*, 2007; Solleiro-Rebolledo *et al.*, 2011; this work), the radiocarbon dates of which provide a basis for correlating the horizons with Tlajinga and Otumba.

Although $\delta^{13}\text{C}$ ratios determined as secondary products of radiocarbon dating are often eliminated from studies seeking to detect paleoenvironmental trends based on published data, in order to avoid potential bias during sample preparation and analysis (Nordt *et al.*, 2007, 2008), Solleiro-Rebolledo (personal communication) evaluated the consistency between the $\delta^{13}\text{C}$ ratios obtained as by-products of radiocarbon dating with those obtained directly from SOM from several profiles in the Teotihuacan Valley; no significant differences were found between the results.

2.1. Objective of $\delta^{13}\text{C}$ studies at Teotihuacan

One of the goals of recent research in the Teotihuacan Valley is the recovery of evidence for changes in the landscape as a result of human impact during the prehispanic

and Colonial period occupations. The analysis of $\delta^{13}\text{C}$ ratios from selected soils in the Teotihuacan Valley was undertaken in order to detect evidence for vegetation change through time (Boutton, 1996; Biedenbender *et al.*, 2004), considered an indicator of landscape modification. Phytolith analysis of the same soils was incorporated to compare with the results obtained from $\delta^{13}\text{C}$ ratios.

Changes in stable carbon isotope ratios in SOM reflect vegetation dynamics. Assuming that the same plant taxa contribute both to soil organic material (SOM) and biogenic silica (phytoliths) present in soil horizons, a relatively close correspondence is expected between the $\delta^{13}\text{C}$ ratios and the percentages of C3 and C4 plants indicated by the phytolith record. Thus, the $\delta^{13}\text{C}$ ratios should be corroborated by evidence obtained from phytolith studies.

3. Methodology: $\delta^{13}\text{C}$ and Phytolith Analyses

$\delta^{13}\text{C}$ ratios were obtained from samples of bulk sediment from diverse contexts in the Teotihuacan Valley (Table 1). For this analysis profiles in which at least one dated buried A-horizon was present were selected. All of the samples considered in this study from which $\delta^{13}\text{C}$ ratios were analyzed were processed by Beta Analytic, Inc., Miami, FL, USA. Pretreatment of sediments consisted of removal of apparent roots and mechanical dispersion in hot HCl to eliminate carbonates. Samples were subsequently rinsed until neutralized, dried and subject to combustion in a closed system. Conventional dates were obtained by benzene synthesis and counting; AMS measurements were based on carbon reduced to graphite. Charred materials were soaked in hot alkali to remove humic acids, rinsed to neutrality, and subjected to an acid wash and again rinsed to neutrality. Conventional radiocarbon dates were obtained from sediments at Tlajinga and Otumba (McClung de Tapia *et al.*, 2005); AMS dates were obtained from San Pablo.

The relative proportion of carbon derived from C4-CAMS plants was calculated by the method described by Kelly *et al.* (1998) using the mean $\delta^{13}\text{C}$ values for C3 and C4-CAMS plants in the Teotihuacan Valley reported by Lounejeva-Baturina *et al.* (2006):

$$\%C4 = (\delta_{\text{SAMPLE}} - \delta_{C3}) / (\delta_{C4} - \delta_{C3}) * 100$$

where δ_{SAMPLE} = $\delta^{13}\text{C}$ value of the sample, δ_{C3} = the mean $\delta^{13}\text{C}$ value of C3 vegetation (-26.96 ‰), and δ_{C4} = the mean $\delta^{13}\text{C}$ value of C4 vegetation (-13.29‰) in the study region.

Phytoliths recovered from the same contexts in the Teotihuacan Valley were considered for comparative analysis (Figure 2). Phytoliths from Tlajinga and Otumba were extracted using the ZnBr technique described by Pearsall (2000), whereas those from San Pablo were extracted using the protocol described by Madella *et al.* (1998). In this study, we focused on the relative proportions of C3 and C4 grass taxa. Diagnostic phytoliths of the

Table 1. Horizons, conventional and calibrated radiocarbon dates and $\delta^{13}\text{C}$ ratios from soil organic material (SOM) and Poaceae phytoliths associated with three sites in the Teotihuacan Valley. The percentage of C4 plants calculated from $\delta^{13}\text{C}$ values is compared with the percentage indicated by phytoliths.

Profile	Elevation (masl)	Horizon	Depth (cm)	No. BETA	Conventional ^{14}C yrs BP	2 Sigma Cal yrs BC/AD ^f	$\delta^{13}\text{C}$	%C4-CAMS ^g	Total Poaceae	Total (%C3)	Total (%C4)	Associated ceramics	Occupation period ^h	
TLAJINGA 19°39'57"N 98°50'41"W	2288	A	0-35									Tlalmimilolpa -Aztec		
		B ₁	35-95									Tlalmimilolpa		
		B ₂	95-120	142228 ^a	2890±50	cal BC 1257-928	-16.2	80.9	239	105 (44%)	134 (56%)			
		C	120-133	142229 ^a	3370±60	cal BC 1873-1506	-16.6	77.9	246	93 (38%)	153 (62%)	Tlalmimilolpa-Xolalpan		
		2A ₁₁	133-158	142230 ^a	2990±80	cal BC 1419-1005	-15.7	84.7	243	129 (53%)	114 (47%)	Miccaotli-Tlalmimilolpa		
		2A ₁₂	158-171	142231 ^a	3110±80	cal BC 1599-1128	-15.8	83.9	258	122 (47%)	136 (53%)	Miccaotli-Tlalmimilolpa		
		2B	171-240										No ceramics	
OTUMBA 19°31'33"N 98°45'46"W	2318	2C	240-260											
		Ap	0-55										Aztec-Colonial	
		C1	55-75	142221 ^a	2980±60	cal BC 1390-1028	-17	74.9	225	89 (40%)	136 (60%)		Aztec	
		C2	75-86	142222 ^a	3540±60	cal BC 2031-1695	-18.3	65	252	118 (47%)	134 (53%)		Aztec	
		2A ₁₁	86-110	142223 ^a	2890±60	cal BC 1263-916	-17.9	68.1	264	93 (35%)	171 (65%)	Mazapan- Early Aztec		
		2A ₁₂	110-137	142224 ^a	3080±70	cal BC 1496-1130	-19.3	57.6	245	83 (34%)	162 (66%)	No Ceramics		
		2AC	137-196											
SAN PABLO 19°42'31"N 98°49'15"W	2300	2C	196-222											
		Ap	0-20										No ceramics	
		C	20-27											
		2A	27-40	219961 ^b	2920±40	cal BC 1261-1006	-17.7	69.6	447	307 (69%)	140 (31%)			
		2AC	40-62											
		2C	62-90											
		3A	90-105	219962 ^b	420±40 ^e	cal AD 1420-1629	-22	37.3	414	277 (67%)	137 (33%)		Aztec-Colonial	
		3C	105-125	293585 ^d	390±40 ^e	cal AD 1437-1634	-24.1	21.5	417	340 (82%)	77 (18%)		Aztec- Colonial	
		4A	125-175	210760 ^b	2140±60	cal BC 370-41	-16.7	77.2	312	218 (70%)	94 (30%)			
				219963 ^c	620±40 ^e	cal AD 1288-1405	-23.3	27.5						Aztec
4AE	175-205	293586 ^d	2060±40	cal BC 184-AD 24	-15.7	84.7	297	180 (61%)	117 (39%)					
5A	205-230	261617 ^c	2980±40	cal BC 1374-1056	-16.7	77.2	289	180 (62%)	109 (38%)					
5Bk	230-260													

^a McClung de Tapia *et al.*, 2005^b Rivera-Uria *et al.*, 2007^c Solleiro-Rebolledo *et al.*, 2011^d This work^e Charred material^f Calibrations based on Intcal09.14c (Stuiver and Reimer, 1993; Reimer *et al.*, 2009)^g %C4-CAMS calculated based on C3=-26.96 and C4-CAMS=-13.67, mean values for Teotihuacan region vegetation (Lounejeva-Baturina *et al.*, 2006)^h Approximate occupation based on Radiocarbon ages of *in situ* charred material

Pooideae subfamily of Poaceae were grouped as C3, whereas those corresponding to the Panicoideae, Chloridoideae and Aristodoideae subfamilies were grouped as C4. With the exception of a single genus, all of the genera of Poaceae corresponding to the subfamily Panicoideae reported in the Teotihuacan region (Castilla-Hernández and Tejero-Diez, 1987) utilize the C4 photosynthetic pathway (Watson and Dallwitz, 1992).

4. Results

Table 1 summarizes the $\delta^{13}\text{C}$ ratios from soil organic material (SOM) and Poaceae phytoliths associated with the three sites studied in the Teotihuacan Valley: Tlajinga, Otumba and San Pablo. The percentage of C4-CAMS plants calculated from $\delta^{13}\text{C}$ values are compared with the proportion of C4 grasses (Poaceae) indicated by phytoliths recovered from the same horizons.

Tlajinga (Figure 3a), situated approximately 500 m south of the Rio San Lorenzo, is located in an area which is dominated today by nopal orchards (*Opuntia* sp.). However, this area conformed part of a prehispanic

irrigation system (Nichols, 1987; Nichols *et al.*, 1991). The earliest horizon for which $\delta^{13}\text{C}$ ratios are available (2A₁₂) reports a value of -15.8 ‰ (83.9 % C4-CAMS), which is entirely consistent with the overlying 2A₁₁ horizon (-15.7 ‰, 84.7 % C4-CAMS). These same horizons report 53 % and 47 % C4 grass phytoliths respectively, with a slight predominance of C3 in 2A₁₁. In both horizons, the proportion of C4 grass phytoliths is significantly lower than that suggested by $\delta^{13}\text{C}$ ratios. Above this, the values for the C horizon (-16.6 ‰, 77.9 % C4-CAMS) and overlying B₂ (-16.2 ‰, 80.9 % C4-CAMS) indicate a slight decrease in C4 vegetation. However, phytoliths continue to indicate a considerably lower proportion of C4 grasses with respect to $\delta^{13}\text{C}$ values: 62% for the C horizon and 56% for the overlying B₂. Both the 2A₁₁ and 2A₁₂ horizons are associated with Teotihuacan period ceramics corresponding to the Miccaotli and Tlalmimilolpa phases (Pérez-Pérez, 2003) dated to approximately AD 150-350, while the overlying C horizon contains Tlalmimilolpa-Xolalpan phase materials (approximately AD 200-500) and predominantly Tlalmimilolpa (AD 200-350) in B₂. Surface ceramics include Tlalmimilolpa together with Late Aztec phase (AD 1350-1520) materials.

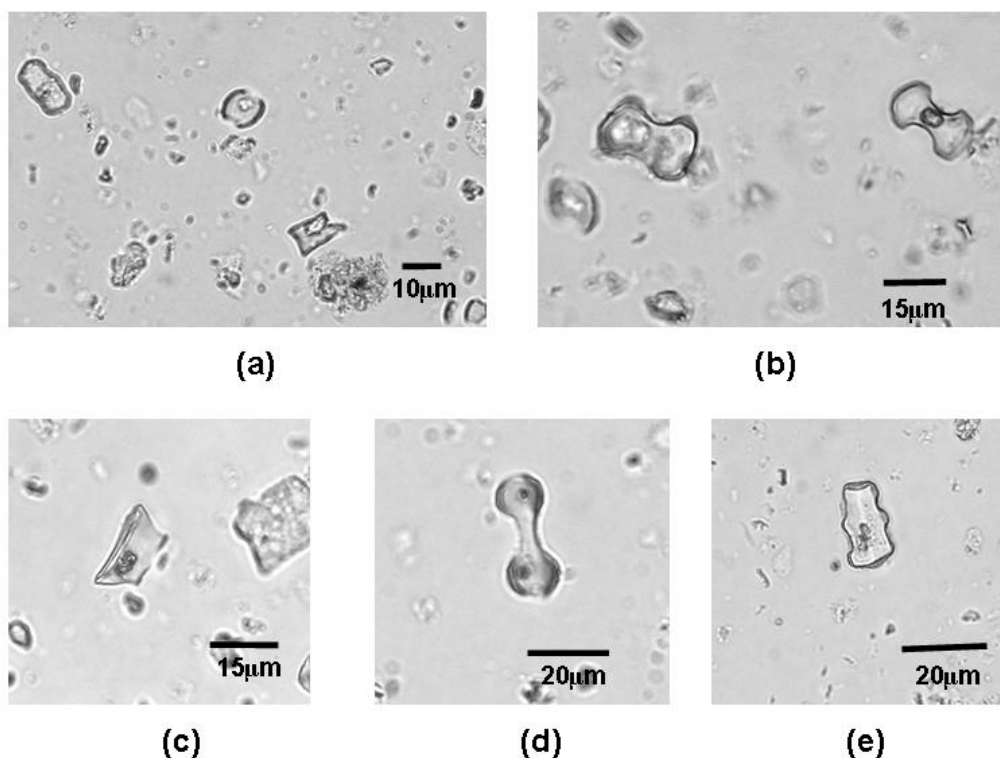


Figure 2. Phytoliths from C3 and C4 grasses (Poaceae) identified in the soils and sediments of Teotihuacan Valley. (a) Chloridoideae saddle-shape, 40x; (b) Pooideae bilobates, 40x; (c) Pooideae rondel, 40x; (d) Aristoideae bilobate, 40x and (e) Pooideae wavy trapezoid, 40x.

The profile at Otumba (Figure 3b) is situated approximately 100 m N of the Barranca del Muerto, adjacent to the Aztec site of Otompan, at a distance of 20 m from archaeological excavations undertaken by Charlton (1990) in remnants of floodwater irrigation canals and fields corresponding to the Aztec occupation. Modern plants on the surface are largely opportunistic taxa associated with abandoned fields, including Chenopodiaceae-Amaranthaceae and Asteraceae. The available $\delta^{13}\text{C}$ ratios indicate values of -19.3‰ (57 % C4-CAMS) for $2A_{12}$ and -17.9‰ (68 % C4-CAMS) in $2A_{11}$. Phytoliths reflect the predominance of C4 grass taxa, 66 % in $2A_{12}$ and 65% in $2A_{11}$. The overlying horizons are characterized by a slight decrease, -18.3‰ , 65% C4-CAMS in C_2 , followed by a subsequent increase, -17‰ , 74.9% C4-CAMS in C_1 . A similar tendency is evident in C_2 where phytoliths from C4 grasses comprise 53 %, followed by a light increase in C_1 (60 % C4).

Ceramics associated with these horizons point to a Mazapan (Toltec)-Early Aztec occupation (approximately AD 950-1350) corresponding to the $2A_{11}$ horizon followed by a Late Aztec occupation (*ca.* AD 1350-1520) in the overlying C_2 and C_1 horizons.

The San Pablo profile (Figure 3c) is located NE of the modern community of San Martín de las Pirámides on a terrace at the edge of the Barranca de Estetes. Adjacent vegetation includes nopal (*Opuntia* sp.) and Chenopodiaceae-Amaranthaceae as well as Asteraceae,

characteristic of perturbed areas. The $\delta^{13}\text{C}$ ratios from horizons in this profile reflect two different sources: SOM (2A, 4A, 4AE, and 5A); and charred material recovered *in situ* from the soil/sedimentary matrix (3A, 3C, and 4A). No archaeological remains were found associated with this profile, useful for relating soil horizons to prehispanic or colonial occupations; however, charred specimens provide approximate dates that allow comparison with Tlajinga and Otumba (Table 1). The 5A horizon is the earliest for which $\delta^{13}\text{C}$ ratios are available, indicating a value of -16.7‰ (77.2 % C4-CAMS). Phytoliths in this soil indicate a predominance of C3 grass taxa (62 %). A slight increase is evident in the 4AE horizon (-15.7‰ , 84.7% C4-CAMS), whereas phytoliths again point to the predominance of C3 taxa (61 %). In 4A a return to higher C4-CAMS is suggested by the $\delta^{13}\text{C}$ values (-16.7‰ , 77.2% C4-CAMS), although the phytoliths recovered indicate 70 % C3 grass taxa. The $\delta^{13}\text{C}$ ratio based on SOM, corresponding to the 2A horizon (-17.7‰ , 69.6 % C4-CAMS), suggests a relative decline in C4-CAMS taxa with respect to the isotopic values in earlier soils. Phytoliths corresponding to the 3C, 3A and 2A horizons indicate a predominance of C3 grass taxa (82 %, 67 % and 69 % respectively).

The 4A soil also provides a date corresponding to the Aztec period, based on a charred specimen that clearly represents a C3 taxon (-23.3‰). Similarly, the 3C and 3A horizons are dated to the Aztec-Colonial period based on charred materials that represent C3 taxa ($\delta^{13}\text{C}$ values are



Figure 3. Landscape features at sites studied in the Teotihuacan Valley: a. Tlajinga; b. Otumba; c. San Pablo. (Photos a and b, Julia Pérez-Pérez).

-24.2 ‰ and -22 ‰ respectively).

5. Discussion

Based on $\delta^{13}\text{C}$ ratios alone, we cannot effectively differentiate between C4 and CAMS plants, especially maize and xerophytic plants such as nopal (*Opuntia* spp.) and maguey (*Agave* spp.). In the central and NE sectors of the Teotihuacan Valley, C4 grasses and CAMS taxa are predominant today, but more favorable conditions for maize cultivation, particularly in association with the use of irrigation, were likely present during the Classic period as well as the Late Postclassic.

One potential limitation of the use of $\delta^{13}\text{C}$ values from SOM in the study region to trace changes in vegetation through time is related to landscape dynamics and, particularly, the impact of erosion. Numerous polycyclic profiles in the Teotihuacan Valley show varying degrees of soil development, either with truncated sequences where part of the profile is no longer present, or superimposed sediments with inverted radiocarbon dates (McClung de Tapia *et al.*, 2005). These upper sediments were the result of erosive events during which older soils from

higher elevations, reworked and mixed with materials of different ages, were deposited at lower elevations. In addition, prehispanic irrigation systems contributed to the redeposition and remixing of sediments in Tlajinga and Otumba. At San Pablo, the river itself transported a large sediment load annually. Therefore, it is not entirely clear to what extent $\delta^{13}\text{C}$ values represent a mixture of plant taxa characteristic of the original soils together with vegetation that developed on redeposited sediments at Tlajinga, Otumba and San Pablo.

$\delta^{13}\text{C}$ ratios can be used to quantify aspects of vegetation dynamics in ecosystems, such as the changes in relative proportions of plants and, by association, the environmental conditions (*e.g.* temperature and humidity) within which they developed. In general, the isotopic signatures reported here indicate changes in relative proportions of C3 and C4-CAMS plants, suggesting variability in the response of vegetation to local conditions, with a predominance of C4 plants in soil organic matter. The chronological framework for such changes is difficult to reconstruct in the Teotihuacan Valley due to notable inversions in the ^{14}C dates (McClung de Tapia *et al.*, 2005; Rivera-Uria *et al.*, 2007; Solleiro-Rebolledo *et al.*, 2011). The problems associated with interpretation of radiocarbon dates obtained from SOM

in bulk sediment samples have been discussed elsewhere (McClung de Tapia *et al.*, 2005). In this study, we were able to construct a broad chronological framework for three sites based on prehispanic and Colonial period ceramics recovered from the horizons together with radiocarbon dates on charred material *in situ* in the matrix of the buried soils and sediments.

From both a methodological and theoretical perspective, an entirely new set of problems is raised, demonstrating the complexity of human ecodynamics through time and implications for landscape reconstruction in the study region. One issue of importance is the extent to which $\delta^{13}\text{C}$ ratios reflect *in situ* vegetation in re-deposited sediments or a mixture with original vegetation from higher elevations prior to erosion. An additional related problem to be addressed as research continues, is the chronology of the erosive events evident in the stratigraphic record.

Although phytoliths suggest overall a greater presence of C3 vegetation in San Pablo, pointing to regionally cooler and more humid conditions, it is likely that C3 taxa reflect the riparian environment characteristic of the river bank. The relatively higher proportion of C4-CAMS plants suggested by the isotope ratios may be related to cultivated plants such as maize and nopal.

In this initial study, emphasis was placed on the comparison of horizons from three sites that appear to be culturally affiliated to the prehispanic and Colonial periods in the Teotihuacan Valley, in order to look at vegetation change and landscape transformation during this period. However, future case studies are required to develop robust interpretations about the paleoenvironment. Furthermore, systematic measurements of modern environmental gradients, together with detailed assessments of soil formation processes are fundamental to achieve this goal.

Acknowledgements

Excavation at Tlajinga and Otumba were carried out by Julia Pérez Pérez as part of the investigation "Paleoenvironment of the Teotihuacan Valley". The research reported here received financial support from CONACYT (25074H) and PAPIIT/DGAPA-UNAM (IN405997 and IN400403) to Emily McClung de Tapia, Principal Investigator. The authors thank Jorge E. Gama-Castro and Bernhard Lucke for comments on an earlier version of this paper.

References

Biedenbender, S.H., McClaran, M.P., Quade, J., Weltz, M.A., 2004, Landscape patterns of vegetation change indicated by soil carbon isotope composition: *Geoderma*, 119, 69-83.
 Boutton, T., 1996, Stable carbon isotope ratios of soil organic matter and

their use as indicators of vegetation and climatic change, *in* Boutton, T.W., Yamasaki, S. (eds.), *Mass Spectrometry of Soils*: New York, New York, USA, Marcel Dekker, Inc., 47-82.
 Castilla-Hernández, M.E., Tejero-Díez, J.D., 1987, Flora y Vegetación del Cerro Gordo (San Juan Teotihuacan) y regiones aledañas, Valle de México, México: *Biótica*, 12, 231-255.
 Charlton, T.H., 1990, Operation 12, Field 20, Irrigation system excavations: Preliminary Report on Recent Research in the Otumba City-State, *in* Mesoamerican Research Colloquium, Department of Anthropology, The University of Iowa, Iowa City, Iowa, Charlton, T.H., Nichols, D.L. (eds.), 201-212.
 Feranec, R.S., 2008, Using stable isotopes as an additional tool to understand ancient human environments: *Coloquios de Paleontología*, 58, 7-11.
 Gould, F.W., Shaw, L.B., 1983, *Grass Systematics*, 2nd Edition: College Station, Texas, Texas A&M University Press, College Station, 412 p.
 Hall, G., Woodborne, S., Scholes, M., 2008, Stable carbon isotope ratios from archaeological charcoal as paleoenvironmental indicators: *Chemical Geology*, 247, 384-400.
 Hart, J.P., Lovis, W.A., Schulenberg, J.K., Urquhart, G.R., 2007, Paleodietary implications from stable carbon isotope analysis of experimental cooking residues: *Journal of Archaeological Science*, 34, 804-813.
 Hart, J.P., Urquhart, G.R., Feranec, R.S., Lovis, W.A., 2009, Non-linear relationship between bulk $\delta^{13}\text{C}$ and percent maize in carbonized cooking residues and the potential of false negatives in detecting maize: *Journal of Archaeological Science*, 36, 2206-2212.
 Johnson, K.D., Wright, D.R., Terry, R.E., 2007, Application of carbon isotope analysis to ancient maize agriculture in the Petexbatún region of Guatemala: *Geochronology*, 22, 313-336.
 Kelly, E.F., Blecker, S.W., Yonker, C.M., Olson, C.G., Wold E.E., Todd, L.C., 1998, Stable isotope composition of soil organic matter and phytoliths as paleoenvironmental indicators: *Geoderma*, 82, 59-81.
 Kerns, B.K., Moore, M.M., Hart, S.C., 2001, Estimating forest-grassland dynamics using soil phytolith assemblages and $\delta^{13}\text{C}$ of soil organic matter: *Écoscience*, 8, 478-488.
 Koch, L., 1998, Isotopic reconstruction of past continental environments: *Annual Review of Earth and Planetary Science*, 26, 573-613.
 Lajtha, K., Marshall, J.D., 1994, Sources of variation in the stable isotopic composition of plants, *in* Lajtha, K., Michener, E.H. (eds.), *Stable Carbon Isotopes in Ecology and Environmental Science*, Oxford, United Kingdom, Blackwell Scientific Publications, 1-21.
 Louhejeva-Baturina, E., Morales-Puente, P., Cabadas-Báez, H.V., Cienfuegos-Alvarado, E., Sedov, S., Vallejo-Gómez, E., Solleiro-Rebolledo, E., 2006, Late Pleistocene to Holocene environmental changes from $\delta^{13}\text{C}$ determinations in soils at Teotihuacan, Mexico: *Geofísica Internacional*, 45, 85-98.
 Louhejeva-Baturina, E., Morales-Puente, P., Cienfuegos-Alvarado, E., Sedov, S., Solleiro-Rebolledo, E., 2007, Late Quaternary environment in the Teotihuacan Valley, Mexico, Inferred from d^{13}C in Soils: *SAS Bulletin*, 30, 6-11.
 Madella, M., Power-Jones A., Jones M., 1998, A simple method of extraction of opal phytoliths from sediments using a non-toxic heavy liquid: *Journal of Archaeological Science*, 25, 801-803.
 McClung de Tapia, E., Aguilar-Hernández, B., 2001, Vegetation and plant use in Postclassic Otumba: *Ancient Mesoamerica*, 12, 113-125.
 McClung de Tapia, E., Solleiro-Rebolledo, E., Gama-Castro, J., Villalpando, J.L., Sedov, S., 2003, Paleosols in the Teotihuacan valley, Mexico: evidence for paleoenvironment and human impact: *Revista Mexicana de Ciencias Geológicas*, 20, 270-282.
 McClung de Tapia, E., Domínguez-Rubio, I., Gama-Castro, J., Solleiro-Rebolledo, E., Sedov, S., 2005, Radiocarbon dates from soil profiles in the Teotihuacan Valley, Mexico: indicators of geomorphological processes: *Radiocarbon*, 47, 159-175.
 McClung de Tapia, E., Cabadas-Báez, H., Solleiro, E., Gama Castro, J., Vallejo, E., 2008, Phytoliths of soils and paleosols of the Teotihuacan Valley, Mexico, *in* Korstanje, A., Babot, M.P. (eds.), *Interdisciplinary nuances in phytolith and other microfossil studies*: Oxford, United Kingdom, BAR International Series, 67-76.

- Nichols, D.L., 1987, Prehispanic irrigation at Teotihuacan, New Evidence: the Tlajinga canals in McClung de Tapia, E., Rattray, E.C. (eds.), Teotihuacan. Nuevos Datos, Nuevas Síntesis, Nuevos Problemas: Cd. Universitaria, México, Instituto de Investigaciones Antropológicas, Universidad Nacional Autónoma de México, Mexico, 133-160.
- Nichols, D.L., Spence, M., Borland, M., 1991, Watering the fields of Teotihuacan: Early irrigation at the ancient city: *Ancient Mesoamerica*, 2, 119-129.
- Nordt, L., von Fischer, J., Tieszan, L., 2007, Late Quaternary temperature record from buried soils of the North American Great Plains: *Geology*, 35, 159-162.
- Nordt, L., von Fischer, J., Tieszan, L., Tubbs, J., 2008, Coherent changes in relative C4 plant productivity and climate during the Late Quaternary in the North American Great Plains: *Quaternary Science Reviews*, 27, 1600-1611.
- Pearsall, D., 2000, *Paleoethnobotany: a Handbook of Procedures* (2nd Edition): San Diego, California, USA, Academic Press, 700 p.
- Pérez-Pérez, J., 2003, La agricultura en Teotihuacan. Una forma de modificación al paisaje: Cd. Universitaria, México, Instituto de Investigaciones Antropológicas/Facultad de Filosofía y Letras, Universidad Nacional Autónoma de México, Master's thesis, 284 p.
- Pessenda, L.C.R., Gomes, B.M., Aravena, R., Ribeiro, A.S., Boulet R., Gouveia, S.E.M., 1998, The carbon isotope record in soils along a forest-cerrado ecosystem transect: implications for vegetation changes in the Rondonia state, southwestern Brazilian Amazon region: *The Holocene*, 8, 599-603.
- Reimer, P.J., Baillie, M.G.L., Bard, E., Bayliss, A., Beck, J.W., Blackwell, P.G., Bronk Ramsey, C., Buck, C.E., Burr, G.S., Edwards, R.L., Friedrich, M., Grootes, P.M., Guilderson, T.P., Hajdas, I., Heaton, T.J., Hogg, A.G., Hughen, K.A., Kaiser, K.F., Kromer, B., McCormac, F.G., Manning, S.W., Reimer, R.W., Richards, D.A., Southon, J.R., Talamo, S., Turney, C.S.M., van der Plicht, J., Weyhenmeyer, C.E., 2009, IntCal09 and Marine09 radiocarbon age calibration curves, 0–50000 years cal BP: *Radiocarbon*, 51, 1111–1150.
- Rivera-Uria, M.Y., Sedov, S., Solleiro-Rebolledo, E., Pérez-Pérez, J., McClung, E., González, A., Gama-Castro, J., 2007, Degradación ambiental en el valle Teotihuacan: evidencias geológicas y paleopedológicas: *Boletín de la Sociedad Geológica Mexicana*, 59, 203-217.
- Seinfeld, D.M., von Nagy, C., Pohl, M.D., 2009, Determining Olmec maize through bulk stable carbon isotope analysis: *Journal of Archaeological Science*, 36, 2560-2565.
- Solleiro-Rebolledo, E., Syncheva, S., Sedov, S., McClung de Tapia, E., Rivera-Uria, Y., Salcido-Berkovich, C., Kuznetsova, A., 2011, Fluvial processes and paleopedogenesis in the Teotihuacan Valley, Mexico: Responses to late Quaternary environmental changes: *Quaternary International*, 233, 40-52.
- Stuiver, M., Reimer, P.J., 1993, Extended ¹⁴C database and revised CALIB radiocarbon calibration program: *Radiocarbon*, 35, 215-230. Calib version 6.0 (calib.qub.ac.uk, accessed 25-XI-2011).
- Vågen, T.G., Walsh, M., Shepherd, K.D., 2006, Stable isotopes for characterization of trends in soil carbon following deforestation and land use change in the highlands of Madagascar: *Geoderma*, 135, 133-139.
- Wang, L., D'Odorico, P., Ries, L., Macko, S.A., 2010, Patterns and implications of plant-soil $\delta^{13}\text{C}$ and $\delta^{15}\text{N}$ values in African savanna ecosystems: *Quaternary Research*, 73, 77-83.
- Watson, L., Dallwitz, M.J., 1992 onwards, The grass genera of the world: descriptions, illustrations, identification, and information retrieval; including synonyms, morphology, anatomy, physiology, phytochemistry, cytology, classification, pathogens, world and local distribution, and references, Institute of Botany, Chinese Academy of Sciences, <http://delta-intkey.com>, April 23rd, 2010.
- Webb, E.A., Schwarcz, H.P., Healy, P.F., 2004, Detection of ancient maize in lowland Maya soils using stable carbon isotopes: evidence from Caracol, Belize: *Journal of Archaeological Science*, 31, 1039-1052.
- Webb, E.A., Schwarcz, H.P., Jensen, C.T., Terry, R.E., Moriarty, M.D., Emery, K.F., 2007, Stable Carbon isotope signature of ancient maize agriculture in the soils of Motul de San José, Guatemala: *Geoarchaeology*, 22, 291-312.
- Wright, D.R., 2005, Soil stable carbon isotope analysis of landscape features at Aguateca, Guatemala: Salt Lake City, Utah, USA, Department of Plant and Animal Science, Brigham Young University, MSc. thesis, 130 p.

Manuscript received: December 20, 2010.

Corrected manuscript received: June 15, 2011.

Manuscript accepted: November 15, 2011.